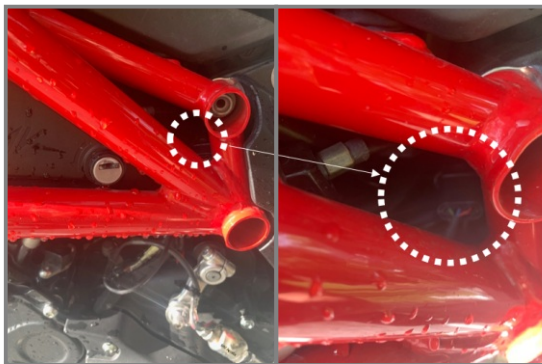


Bi-directional quickshifter sensor for MV Agusta

**SHIFTING
CONTRoll**
www.QS.vyrobce.cz

Brutale 675 2015; Brutale 800 2015-17 (RR2015-16);
Dragster 2015-17 (RR 2016); F3 675 2015-16; F3 800 2015-16;
F4 RC 2015-16; Rivale 800 2015-17; Turismo Veloce 800 2015-17; Stradale 800 2015-16

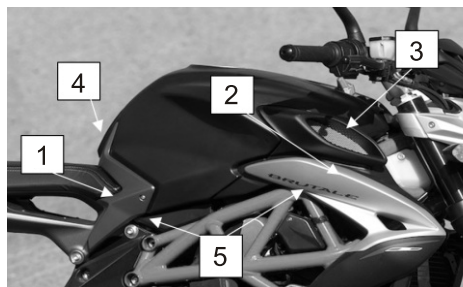
Thank you for choosing "Shifting ContRoll". Use QS sensor on closed road only.



Disconnect quickshifter sensor connector in hole of frame (above).

...if it is not possible then...

Remove side covers position [1] and [2], air inlet [3] and tank cover [4]. Tank is tighten by 4 bolts M10 under covers [5]. Lift fuel tank carefully because fuel hose is short. Disconnect fuel line for higher position of fuel tank. Disconnect quickshifter sensor connector.



Loose hex socket bolts M6 on shifting arm and on shifting lever for remove quickshifter sensor from motorcycle.



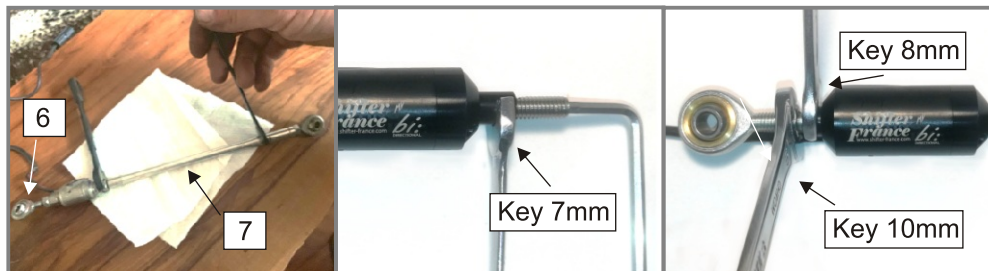
Bi-directional quickshifter sensor for MV Agusta

**SHIFTING
CONTROL**
www.QS.vyrobce.cz

Remove upper ball joint [6] (left-hand thread) from sensor. Remove shifting rod [7] from sensor (right-hand thread).

Insert bolt M6 to right end of sensor and screw the shifting rod on it.

Screw left-hand ball joint to left end of sensor (end with cable) and tight bolt for locking.



Use plastic cable tie to fix the cable in place.

MV Agusta company do not recommend use clutchless shifting from 1st to 2nd gear and from 2nd to 1st gear.



enjoy the ride