



### 1) Ignition coils

Disconnect Orange/White wire from ignition coil 1.  
Connect Yellow wire from QS unit to ignition coil terminal and Red wire from QS unit to Orange/White wire - see picture below.  
Do it same with Black/Orange wire on ignition coil 2.

### 1) Injectors

Remove Yellow/Red wire (female pin) from 6way black connector (see below) by needle. Insert Yellow/Red wire to free position in connector. Place White wire from QS wiring harness instead of Yellow/Red wire. (White wire from QS goes to Yellow/Red wire to injectors now).

### 2) RPM connection

Connect Blue wire from QS unit to ignition coil #1-to W/B wire or to ignition coil #2-to black wire.

### 3) Gear position sensor connection

Connect pink wire from QS unit to pink wire in GP sensor connector if you want use Multi kill time - see page 3 - Kill time for QS.

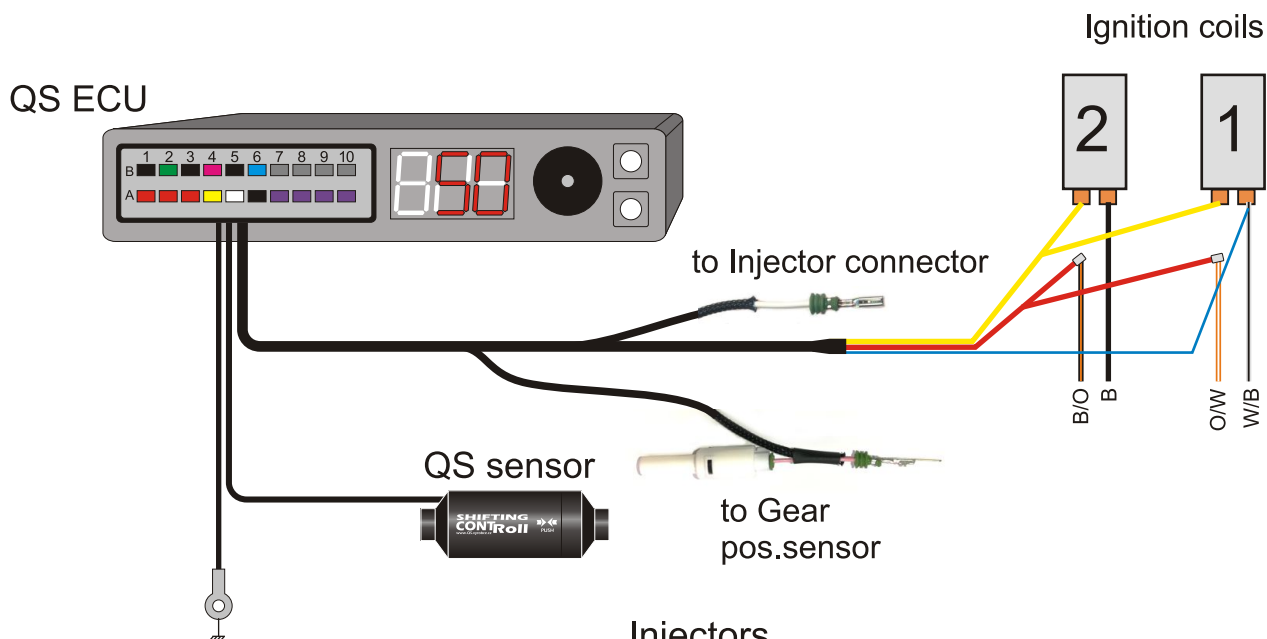
### 4) Ground connection

Connect black wire of QS to negative terminal of battery (or to frame of motorcycle)

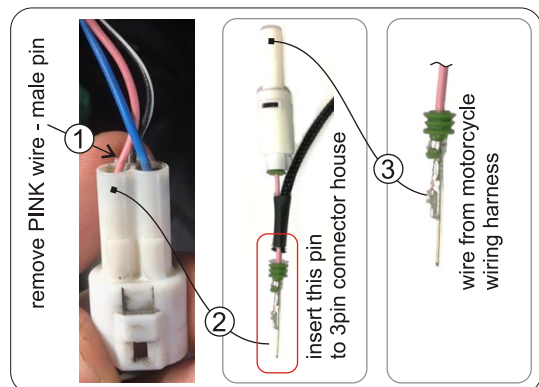
### 5) QS sensor

Connect QS sensor to QS wiring harness - black 2 pin connector.

Set "GSX-R mode" - page 4, MENU D00



### Gear Position Sensor



### Injectors

