



1) Ignition coils

Disconnect connectors from ignition coils and insert connectors of QS. Order is arbitrary. Check if White/Red wire of motorcycle wiring harness is connect with RED wire of QS wiring harness.

2) Injectors

Disconnect black connector from injectors wiring sub-harness (see bellow). Remove male pin with Yellow/Red wire by needle and place it to QS connector with White wire.

3) Gear position sensor connection

Disconnect 3pin white Sumitomo connector from GP sensor and remove female pin with Pink wire by needle. Insert female pin on QS wiring harness instead of original Pink wire. Insert motorcycle female pin to plastic house on QS wiring harness - see pictue below.

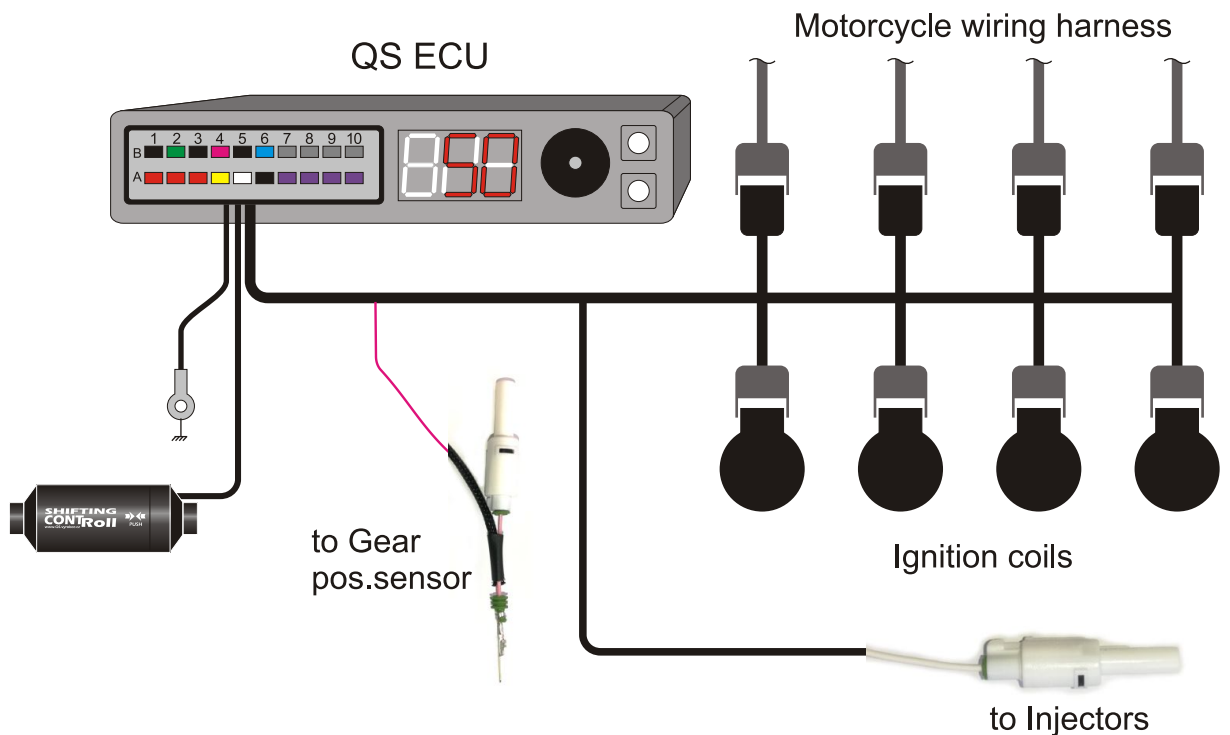
4) Ground connection

Connect black wire of QS to negative terminal of battery (or to frame of motorcycle)

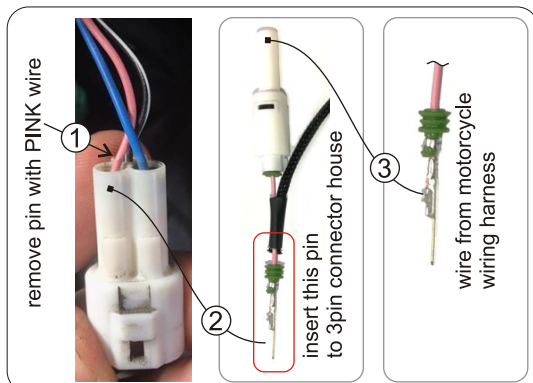
5) QS sensor

Connect QS sensor to QS wiring harness - black 2 pin connector.

ATTENTION1: Activate GSX-R mode if your bike light up FI red light on dashboard.



Gear Position Sensor



Injectors

